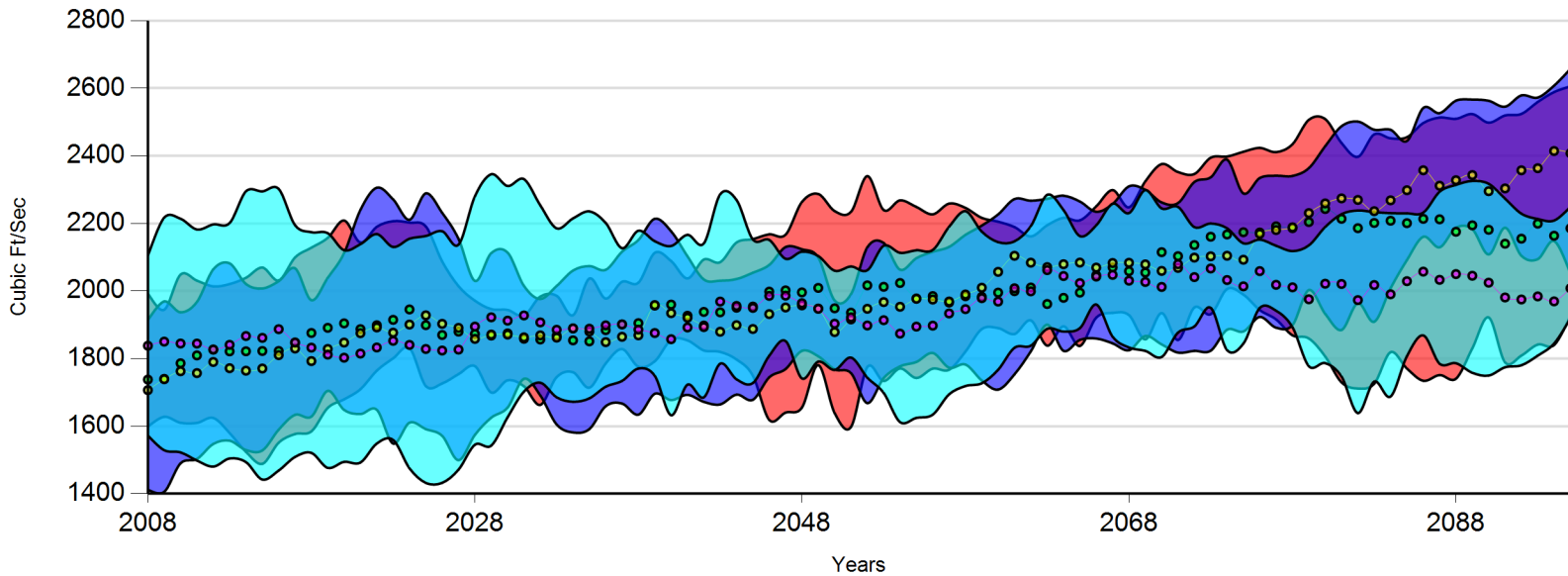


Simulated flow by emission scenario at Pateros, WA between 2008 and 2095

- sresa1b - Range Values
- sresa1b - Average
- sresa2 - Range Values
- sresa2 - Average
- sresb1 - Range Values
- sresb1 - Average



segment_cfs204: Methow R. nr. Pateros

SRESa2: Very heterogeneous world with high population growth and slow economic growth

SRESb1: Convergent world with low population growth and rapid changes in economic structure

SRESa1b: World with very rapid economic growth, a global population that peaks in mid-century, and rapid introduction of new and more efficient technologies balanced across all sources

Scenario	Average (Cubic Ft/Sec)	Min (Cubic Ft/Sec)	Max (Cubic Ft/Sec)	Central Year
sresa1b	1737.889	1599.190	1991.775	2008
sresa1b	1740.198	1627.862	1944.687	2009
sresa1b	1786.263	1610.136	2048.614	2010
sresa1b	1809.486	1609.762	2030.761	2011
sresa1b	1826.439	1624.434	2013.744	2012
sresa1b	1821.475	1579.833	2020.571	2013
sresa1b	1821.758	1524.187	2039.200	2014
sresa1b	1822.574	1488.660	2069.494	2015
sresa1b	1822.675	1551.382	2031.396	2016
sresa1b	1846.584	1576.942	2099.245	2017
sresa1b	1875.859	1584.616	2128.226	2018
sresa1b	1891.099	1654.271	2157.169	2019
sresa1b	1904.308	1679.457	2208.593	2020
sresa1b	1887.223	1709.414	2143.591	2021
sresa1b	1898.706	1764.454	2189.964	2022
sresa1b	1914.785	1800.794	2206.656	2023
sresa1b	1945.553	1831.287	2202.369	2024
sresa1b	1899.042	1718.967	2191.017	2025
sresa1b	1869.905	1726.492	2087.601	2026
sresa1b	1879.882	1754.128	2014.296	2027
sresa1b	1872.972	1777.723	1971.412	2028
sresa1b	1868.247	1699.736	1946.397	2029

Scenario	Average (Cubic Ft/Sec)	Min (Cubic Ft/Sec)	Max (Cubic Ft/Sec)	Central Year
sresa1b	1874.679	1735.873	1944.080	2030
sresa1b	1858.723	1718.225	1927.022	2031
sresa1b	1856.619	1663.039	1983.499	2032
sresa1b	1867.739	1745.299	1985.819	2033
sresa1b	1854.111	1759.726	1928.423	2034
sresa1b	1851.186	1714.008	2036.791	2035
sresa1b	1884.308	1785.616	1977.713	2036
sresa1b	1901.307	1828.407	2027.342	2037
sresa1b	1904.914	1776.317	2024.669	2038
sresa1b	1956.815	1792.075	2112.958	2039
sresa1b	1959.950	1855.695	2088.788	2040
sresa1b	1926.878	1853.904	2037.218	2041
sresa1b	1938.220	1824.246	2093.029	2042
sresa1b	1937.093	1819.911	2085.340	2043
sresa1b	1950.643	1797.487	2143.581	2044
sresa1b	1954.108	1749.486	2153.525	2045
sresa1b	1998.225	1618.685	2167.791	2046
sresa1b	2001.848	1640.355	2166.686	2047
sresa1b	1996.061	1655.043	2263.363	2048
sresa1b	2009.279	1780.885	2287.189	2049
sresa1b	1948.938	1639.065	2236.525	2050
sresa1b	1936.013	1597.628	2234.119	2051
sresa1b	2016.733	1775.059	2340.084	2052
sresa1b	2012.503	1733.777	2239.565	2053
sresa1b	2023.738	1770.898	2268.270	2054
sresa1b	1977.943	1742.658	2248.761	2055
sresa1b	1985.016	1770.417	2226.792	2056

Scenario	Average (Cubic Ft/Sec)	Min (Cubic Ft/Sec)	Max (Cubic Ft/Sec)	Central Year
sresa1b	1965.954	1766.994	2258.692	2057
sresa1b	1984.603	1820.816	2246.066	2058
sresa1b	1982.811	1887.481	2216.432	2059
sresa1b	1995.321	1890.347	2205.263	2060
sresa1b	1999.538	1872.871	2189.339	2061
sresa1b	2010.371	1913.125	2161.469	2062
sresa1b	1961.702	1838.388	2194.596	2063
sresa1b	1979.936	1895.603	2216.604	2064
sresa1b	1995.297	1837.515	2209.052	2065
sresa1b	2046.737	1921.235	2250.558	2066
sresa1b	2069.888	1935.337	2298.761	2067
sresa1b	2058.749	1928.905	2247.621	2068
sresa1b	2054.784	1856.965	2324.379	2069
sresa1b	2114.985	1934.787	2375.721	2070
sresa1b	2103.115	1855.147	2352.034	2071
sresa1b	2136.044	1951.376	2346.247	2072
sresa1b	2160.673	1931.542	2394.544	2073
sresa1b	2167.356	2006.078	2397.872	2074
sresa1b	2173.992	1989.385	2412.059	2075
sresa1b	2173.101	1943.739	2423.484	2076
sresa1b	2191.467	1915.991	2410.980	2077
sresa1b	2186.099	1868.907	2434.345	2078
sresa1b	2204.192	1859.743	2506.589	2079
sresa1b	2242.699	1806.583	2508.963	2080
sresa1b	2213.777	1729.748	2438.115	2081
sresa1b	2186.048	1711.559	2397.130	2082
sresa1b	2201.490	1725.772	2463.499	2083

Scenario	Average (Cubic Ft/Sec)	Min (Cubic Ft/Sec)	Max (Cubic Ft/Sec)	Central Year
sresa1b	2208.048	1819.027	2451.850	2084
sresa1b	2200.903	1770.657	2455.088	2085
sresa1b	2213.638	1734.386	2497.023	2086
sresa1b	2212.249	1751.406	2513.293	2087
sresa1b	2175.429	1740.594	2509.514	2088
sresa1b	2194.470	1830.501	2523.623	2089
sresa1b	2181.214	1922.093	2498.151	2090
sresa1b	2140.098	1788.996	2519.431	2091
sresa1b	2154.985	1808.940	2524.013	2092
sresa1b	2199.310	1841.602	2559.371	2093
sresa1b	2163.635	1840.171	2588.754	2094
sresa1b	2185.592	1925.208	2605.665	2095
sresa2	1706.745	1411.293	1914.822	2008
sresa2	1738.977	1405.911	1969.123	2009
sresa2	1762.650	1490.241	1937.049	2010
sresa2	1757.136	1503.041	1967.649	2011
sresa2	1790.089	1547.494	2064.050	2012
sresa2	1771.728	1557.159	2081.794	2013
sresa2	1764.274	1529.436	2020.775	2014
sresa2	1770.705	1528.200	2007.481	2015
sresa2	1810.359	1589.839	2029.068	2016
sresa2	1829.979	1633.785	2067.170	2017
sresa2	1792.616	1628.494	1972.835	2018
sresa2	1828.693	1704.617	2039.073	2019
sresa2	1847.573	1648.403	2112.108	2020
sresa2	1875.316	1635.938	2240.054	2021

Scenario	Average (Cubic Ft/Sec)	Min (Cubic Ft/Sec)	Max (Cubic Ft/Sec)	Central Year
sresa2	1892.234	1648.562	2305.788	2022
sresa2	1876.869	1548.601	2271.121	2023
sresa2	1900.855	1610.488	2210.830	2024
sresa2	1928.172	1591.474	2288.971	2025
sresa2	1902.986	1571.528	2231.357	2026
sresa2	1891.021	1499.583	2154.249	2027
sresa2	1858.468	1574.431	2029.882	2028
sresa2	1871.201	1625.282	2112.188	2029
sresa2	1871.174	1655.152	2113.739	2030
sresa2	1862.958	1740.227	2015.188	2031
sresa2	1868.885	1691.231	1976.444	2032
sresa2	1862.195	1604.998	2014.965	2033
sresa2	1889.129	1581.515	2060.567	2034
sresa2	1880.101	1591.428	2073.850	2035
sresa2	1848.842	1659.153	2062.738	2036
sresa2	1864.648	1667.158	2116.439	2037
sresa2	1868.961	1634.156	2150.938	2038
sresa2	1958.484	1695.909	2213.697	2039
sresa2	1934.539	1677.347	2176.788	2040
sresa2	1920.899	1692.850	2102.728	2041
sresa2	1897.791	1672.024	2034.188	2042
sresa2	1879.494	1664.450	2030.509	2043
sresa2	1898.920	1693.485	2035.473	2044
sresa2	1887.735	1678.118	2054.109	2045
sresa2	1931.801	1744.692	2077.061	2046
sresa2	1951.321	1769.164	2130.035	2047
sresa2	1957.584	1823.013	2123.523	2048

Scenario	Average (Cubic Ft/Sec)	Min (Cubic Ft/Sec)	Max (Cubic Ft/Sec)	Central Year
sresa2	1948.174	1806.843	2099.394	2049
sresa2	1878.539	1768.222	1972.020	2050
sresa2	1916.110	1757.238	1990.592	2051
sresa2	1947.490	1668.342	2129.268	2052
sresa2	1967.303	1742.582	2142.157	2053
sresa2	1953.444	1777.099	2063.118	2054
sresa2	1977.050	1790.108	2097.217	2055
sresa2	1974.814	1816.661	2116.176	2056
sresa2	1969.029	1773.150	2130.506	2057
sresa2	1989.846	1782.604	2166.237	2058
sresa2	2009.859	1735.451	2193.513	2059
sresa2	2056.670	1708.321	2226.712	2060
sresa2	2104.339	1753.503	2272.157	2061
sresa2	2083.963	1821.638	2267.194	2062
sresa2	2070.734	1900.500	2272.759	2063
sresa2	2079.342	1823.011	2281.988	2064
sresa2	2084.133	1855.401	2264.909	2065
sresa2	2069.417	1859.461	2234.480	2066
sresa2	2082.973	1845.125	2257.265	2067
sresa2	2083.513	1824.749	2309.815	2068
sresa2	2078.898	1866.887	2299.608	2069
sresa2	2059.557	1842.135	2262.080	2070
sresa2	2068.434	1817.768	2260.138	2071
sresa2	2098.919	1822.910	2322.610	2072
sresa2	2102.819	1823.377	2336.363	2073
sresa2	2104.368	1885.522	2388.726	2074
sresa2	2092.630	1880.293	2288.654	2075

Scenario	Average (Cubic Ft/Sec)	Min (Cubic Ft/Sec)	Max (Cubic Ft/Sec)	Central Year
sresa2	2169.171	1923.180	2334.391	2076
sresa2	2180.540	1891.413	2341.217	2077
sresa2	2188.526	1899.172	2340.521	2078
sresa2	2230.687	2002.990	2363.524	2079
sresa2	2259.300	1932.704	2428.433	2080
sresa2	2274.177	1884.743	2487.575	2081
sresa2	2269.517	1964.058	2501.432	2082
sresa2	2236.300	1909.144	2477.292	2083
sresa2	2268.387	2008.319	2477.197	2084
sresa2	2298.234	2091.667	2443.831	2085
sresa2	2357.387	2160.527	2541.602	2086
sresa2	2311.632	2129.367	2526.403	2087
sresa2	2327.881	2187.214	2563.330	2088
sresa2	2343.137	2182.989	2566.486	2089
sresa2	2295.481	2108.319	2562.926	2090
sresa2	2303.648	2187.326	2545.394	2091
sresa2	2357.271	2104.374	2578.912	2092
sresa2	2363.421	2094.323	2572.437	2093
sresa2	2414.305	2148.009	2607.709	2094
sresa2	2408.009	2053.426	2657.216	2095
sresb1	1838.129	1572.159	2105.437	2008
sresb1	1850.323	1528.939	2217.165	2009
sresb1	1844.664	1522.527	2213.852	2010
sresb1	1844.615	1498.454	2182.009	2011
sresb1	1827.134	1480.387	2197.119	2012
sresb1	1840.831	1504.582	2201.175	2013

Scenario	Average (Cubic Ft/Sec)	Min (Cubic Ft/Sec)	Max (Cubic Ft/Sec)	Central Year
sresb1	1866.861	1493.838	2295.007	2014
sresb1	1861.448	1442.102	2294.896	2015
sresb1	1887.093	1468.869	2302.026	2016
sresb1	1847.991	1509.009	2194.889	2017
sresb1	1832.543	1521.142	2174.005	2018
sresb1	1811.896	1476.714	2171.176	2019
sresb1	1802.758	1494.518	2120.849	2020
sresb1	1814.905	1492.474	2138.644	2021
sresb1	1832.976	1548.699	2168.543	2022
sresb1	1852.621	1559.465	2130.316	2023
sresb1	1840.642	1475.429	2154.708	2024
sresb1	1828.536	1432.316	2162.818	2025
sresb1	1823.940	1432.343	2176.897	2026
sresb1	1826.703	1471.476	2137.219	2027
sresb1	1894.882	1545.148	2280.219	2028
sresb1	1922.347	1542.712	2345.598	2029
sresb1	1912.317	1626.313	2310.780	2030
sresb1	1927.771	1702.308	2331.080	2031
sresb1	1907.187	1728.615	2253.519	2032
sresb1	1885.399	1685.575	2185.373	2033
sresb1	1889.597	1672.331	2214.818	2034
sresb1	1888.528	1682.404	2235.544	2035
sresb1	1898.422	1716.823	2201.483	2036
sresb1	1901.298	1734.006	2126.719	2037
sresb1	1885.812	1770.688	2178.396	2038
sresb1	1875.707	1749.187	2147.459	2039
sresb1	1857.493	1632.470	2133.106	2040

Scenario	Average (Cubic Ft/Sec)	Min (Cubic Ft/Sec)	Max (Cubic Ft/Sec)	Central Year
sresb1	1892.254	1722.882	2166.275	2041
sresb1	1893.305	1685.418	2140.837	2042
sresb1	1968.765	1784.992	2285.988	2043
sresb1	1955.893	1738.774	2269.455	2044
sresb1	1950.190	1727.730	2152.548	2045
sresb1	1985.651	1808.512	2151.233	2046
sresb1	1986.452	1852.116	2095.370	2047
sresb1	1963.984	1741.471	2116.478	2048
sresb1	1947.326	1791.141	2103.627	2049
sresb1	1903.461	1766.501	2060.151	2050
sresb1	1922.284	1803.087	2072.695	2051
sresb1	1898.053	1743.764	2061.476	2052
sresb1	1913.714	1698.437	2133.866	2053
sresb1	1874.011	1612.216	2113.067	2054
sresb1	1894.705	1624.613	2120.681	2055
sresb1	1897.507	1634.115	2121.429	2056
sresb1	1933.653	1694.215	2190.114	2057
sresb1	1946.438	1718.834	2236.139	2058
sresb1	1978.926	1726.984	2175.796	2059
sresb1	1968.783	1766.965	2144.641	2060
sresb1	2008.147	1832.117	2147.106	2061
sresb1	1999.106	1838.226	2192.174	2062
sresb1	2061.871	1888.079	2284.615	2063
sresb1	2044.439	1880.259	2239.553	2064
sresb1	2023.421	1890.185	2162.564	2065
sresb1	2042.737	1960.100	2194.476	2066
sresb1	2047.842	1864.941	2258.264	2067

Scenario	Average (Cubic Ft/Sec)	Min (Cubic Ft/Sec)	Max (Cubic Ft/Sec)	Central Year
sresb1	2030.756	1832.939	2230.581	2068
sresb1	2026.802	1822.863	2298.680	2069
sresb1	2012.130	1804.828	2244.489	2070
sresb1	2079.374	1876.927	2248.915	2071
sresb1	2041.257	1895.102	2189.110	2072
sresb1	2066.731	1950.439	2199.876	2073
sresb1	2032.573	1825.194	2185.755	2074
sresb1	2013.940	1844.553	2141.069	2075
sresb1	2058.893	1949.886	2152.129	2076
sresb1	2018.380	1941.756	2134.004	2077
sresb1	2010.998	1892.821	2118.167	2078
sresb1	1975.600	1777.608	2135.053	2079
sresb1	2021.659	1786.829	2189.436	2080
sresb1	2020.870	1747.049	2227.498	2081
sresb1	1973.158	1638.728	2238.330	2082
sresb1	2017.786	1732.104	2233.151	2083
sresb1	1990.365	1687.753	2230.437	2084
sresb1	2029.163	1807.167	2229.767	2085
sresb1	2057.431	1868.617	2232.062	2086
sresb1	2033.134	1784.986	2293.921	2087
sresb1	2050.153	1786.407	2314.147	2088
sresb1	2045.228	1758.089	2325.687	2089
sresb1	2024.747	1749.900	2317.412	2090
sresb1	1981.045	1774.410	2273.403	2091
sresb1	1975.050	1780.234	2228.888	2092
sresb1	1984.178	1808.894	2213.219	2093
sresb1	1969.426	1844.492	2208.546	2094

Scenario	Average (Cubic Ft/Sec)	Min (Cubic Ft/Sec)	Max (Cubic Ft/Sec)	Central Year
sresb1	2008.181	1918.973	2248.520	2095