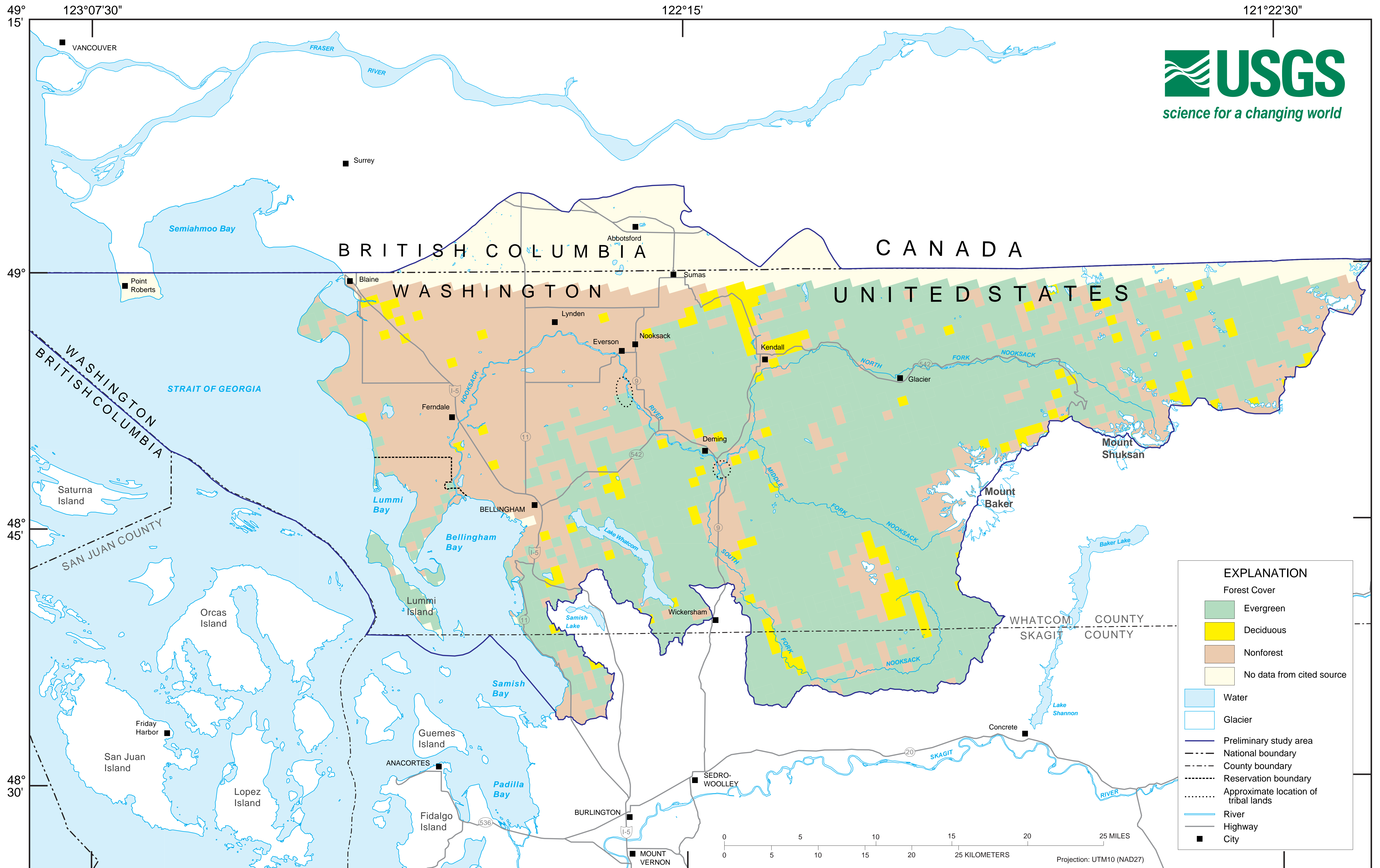


Evergreen and Deciduous Forest Cover in the WRIA 1 Study Area in 1992



EXPLANATION

Forest Cover

- Evergreen
- Deciduous
- Nonforest
- No data from cited source

Water

Glacier

Preliminary study area

National boundary

County boundary

Reservation boundary

Approximate location of tribal lands

River

Highway

City

Modified from: Powell, D.S., Faulkner, J.L., Darr, D., Zhu, D., and MacCleery, D.W., 1994. Forest resources of the United States, 1992: U.S. Department of Agriculture, Forest Service, Rocky Mountain Forest and Range Experiment Station, Fort Collins, Colorado, Gen. Tech. Report RM 234, 1 plate, 132 p. Digital data online on the World Wide Web from the Universal Resources Locator (URL): http://www.epa.gov/docs/grd/forest_inventory/, accessed January 10, 2000

Provisional and subject to revision
Last modified, January 31, 2000